



## 1994—2001 1/2 Electric EZ-Go 4” Lift

Thank you for choosing Rough Country. We have been designing lift kits for trucks and SUVs for over 30 years and are extremely pleased you have chosen us for your golf cart lift needs.

Please read instructions before beginning installation. Check the kit hardware against the parts list of these instructions. Be sure you have all needed parts and know where they go. Also please review tools needed list and make sure you have needed tools.

### PRODUCT USE INFORMATION

As a general rule, the taller a vehicle is, the easier it will roll. Avoid situations where a side rollover may occur.

Generally, braking performance and capability are decreased when larger/heavier tires and wheels are used. Take this into consideration while driving. Do not add, alter, or fabricate any factory or after-market parts to increase vehicle height over the intended height of the Rough Country product purchased. Mixing component brands is not recommended.

Rough Country makes no claims regarding lifting devices and excludes any and all implied claims. We will not be responsible for any product that is altered. If question exist we will be happy to answer any questions concerning the design, function, and correct use of our products.

This suspension system was developed using a 22” to 23” diameter x 10.5” wide tires, and wheels with 2” backspace for maximum stability. **Note—Stock wheels will not work with the wider tires.**

### NOTICE TO DEALER AND VEHICLE OWNER

Any vehicle equipped with any Rough Country product should have a “Warning to Driver” decal installed on the steering column. The decal should act as a constant reminder for whoever is operating the vehicle of its unique handling characteristics.

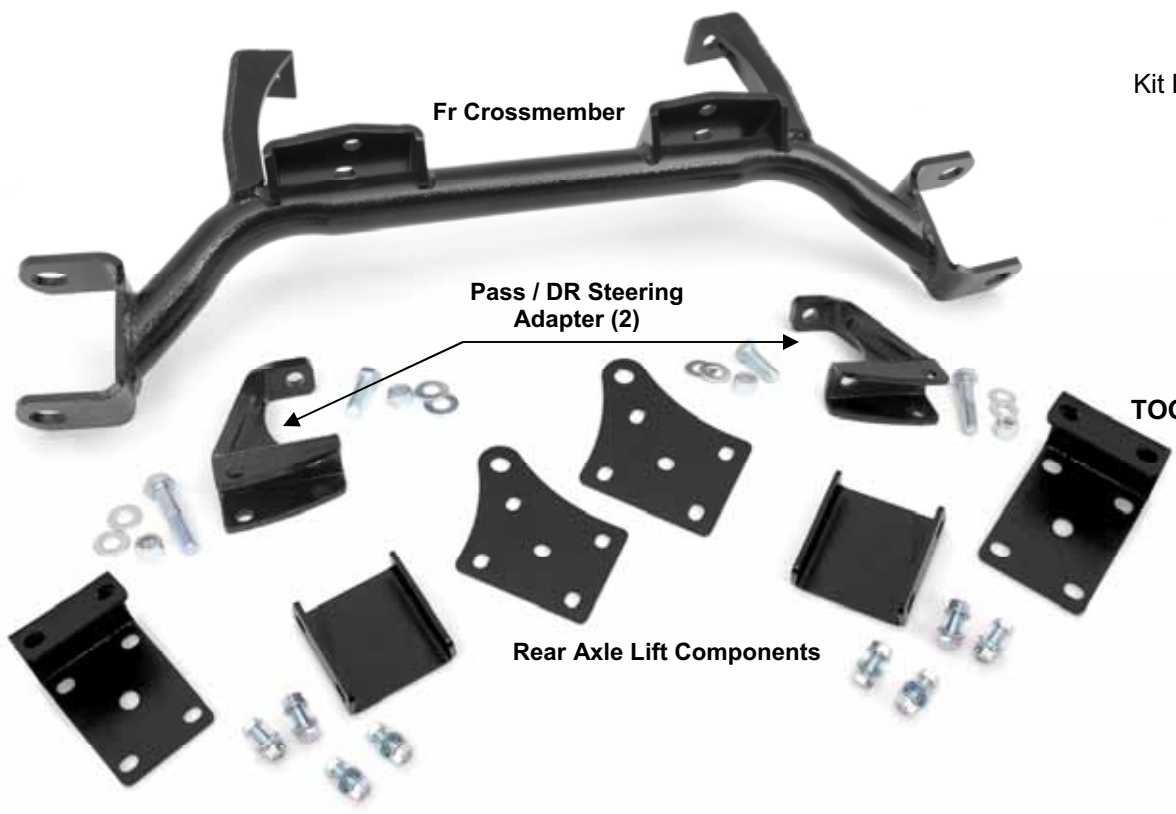
### KIT CONTENTS:

### Kit Contents:

- Front Crossmember
- Steering Adapter (2)
- Rear Axle Brackets
- Kit Bag Containing:
  - 10mmx 55mm Bolt (2)
  - 10mm Lock Nut (2)
  - 10mm Flat Washer (4)
  - 7/16” x 1 1/4” Bolt (2)
  - 7/16” Lock Nut (2)
  - 7/16” Flat Washer (4)
  - 3/8” x 1” Bolt (8)
  - 3/8” x Lock Nut (8)
  - 3/8” Flat Washer (8)

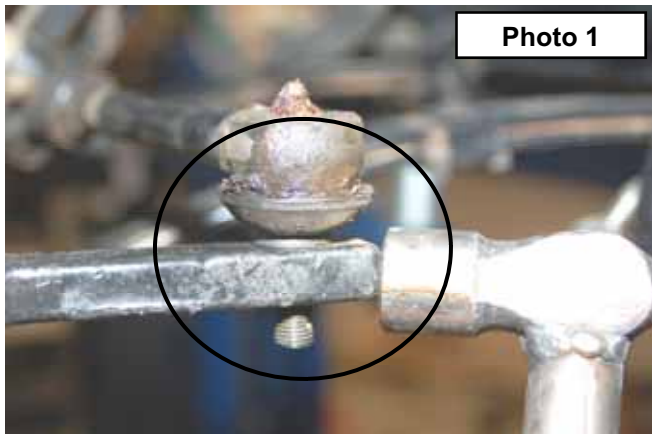
### TOOLS NEEDED:

- Floor Jack
- Jack stands
- 9/16” socket / wrench
- 5/8” Socket / wrench
- 3/4” Socket / Wrench
- 17mm Socket / wrench
- 18mm socket / wrench

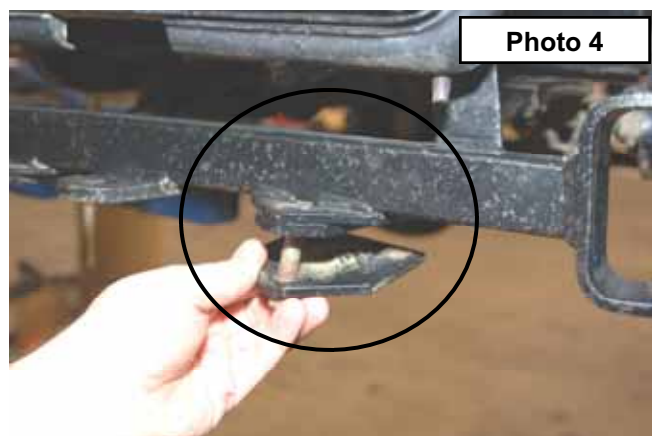
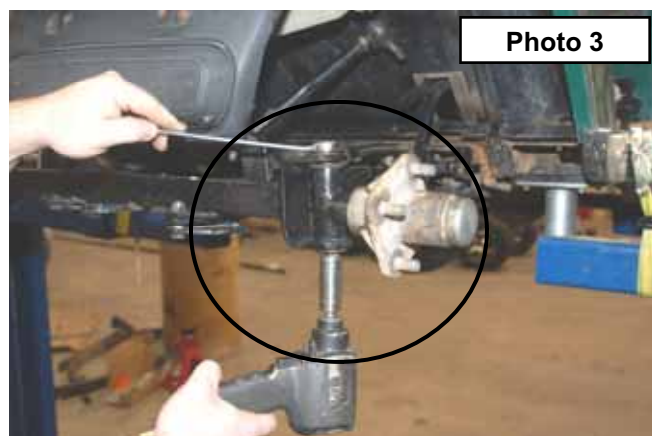


## FRONT INSTALLATION

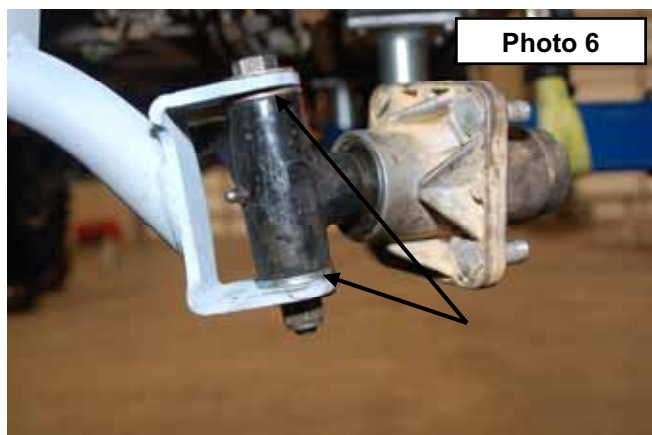
1. Jack up the front end of the cart and place it on jack stands. You will be installing larger wheels and tires so raise the cart high enough to accommodate for the additional height.
2. Remove the wheels and tires using a 3/4" socket.
3. Remove the cotter pins from tie rod end and remove the nut using a 18mm wrench.
4. Strike the tie rod as shown to release the tie rod from the spindles. **See Photo 1.**
5. Remove the shock absorber from the front cross-member using a 9/16" wrench. **See Photo 2.**



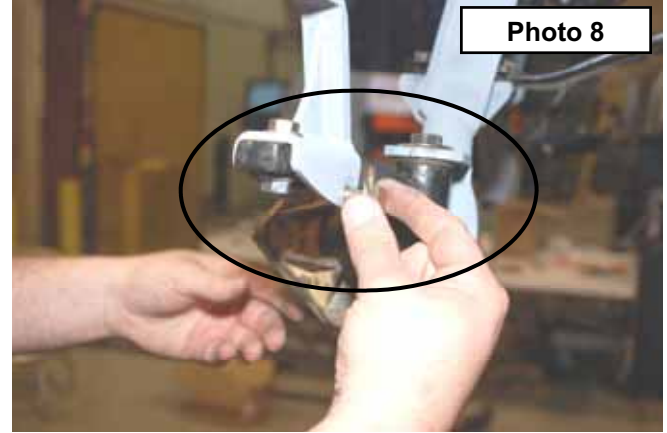
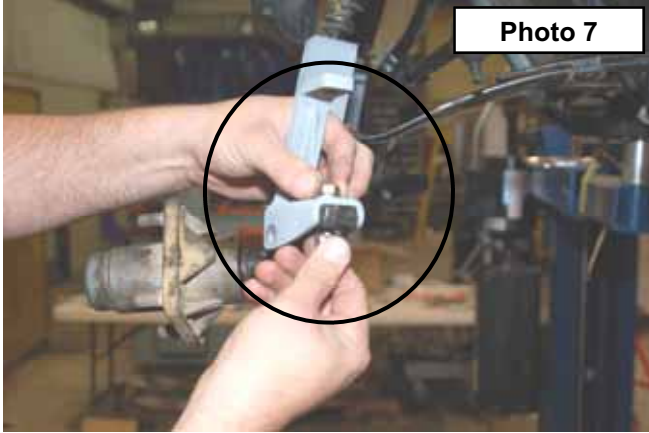
6. Remove the spindles from the front axle using a 3/4" wrench. **See Photo 3.** Retain the stock hardware for reuse.
7. Using a 9/16" wrench remove the front axle from the leaf springs by removing the three bolts per side. Retain hardware for reuse. **See Photo 4.**



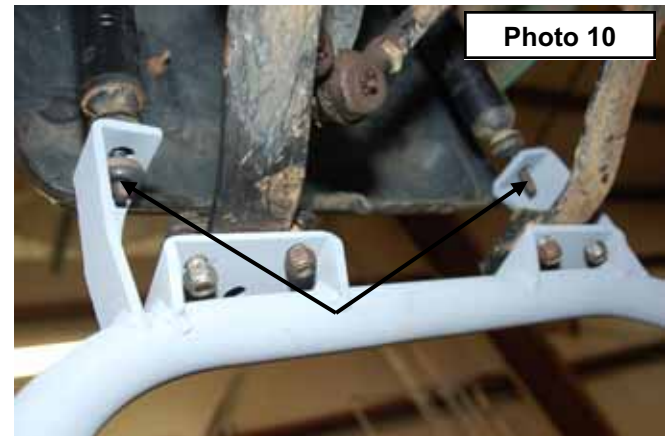
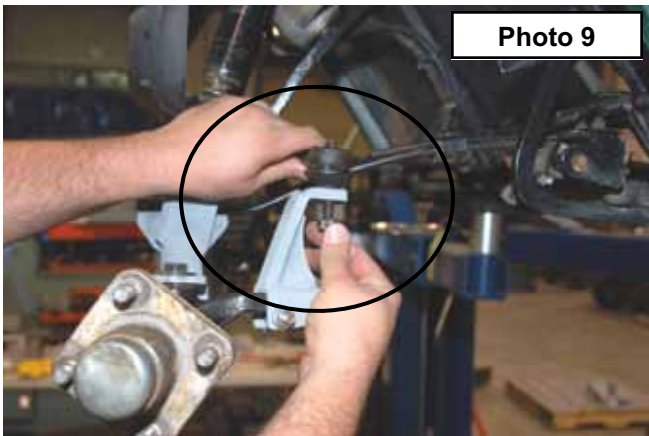
8. Install the new front cross member with the stock hardware and mount the leaf springs to the new axle using the stock hardware and supplied spring plates. **See Photo 5.** Tighten using a 9/16" wrench.
9. Reinstall the stock spindles in the front cross-member with the stock hardware. **See Photo 6.** Tighten using a 3/4" wrench.



10. Install the supplied steering brackets to the stock spindles with the supplied hardware. The supplied 1 1/4" bolt will install in the stock hole in the knuckle. **See Photo 7.** Do not tighten at this time.
11. The supplied 2" bolt will install on the remaining hole on the bottom of the steering bracket. **See Photo 8.** Tighten both bolts using a 5/8" wrench on the 1 1/4" bolt and a 17mm wrench on the 2" bolt.



12. Attach the tie rod ends to the extensions. Install the stock cotter pin and nut. Tighten nut using a 3/4" wrench. **See Photo 9.**
13. Reinstall the shocks to the new cross-member. **See Photo 10.**



14. Tighten all hardware.
15. Install tires and wheels. Wider diameter wheels / tires are recommended for maximum stability.
16. Jack up the cart, remove the jack stands and lower the vehicle to the ground.
17. Set the toe in on the front end to approx 1/8".

## REAR INSTALLATION

1. Jack up the rear of the cart and put it on stands.
2. Remove the lower shock mount from the axle using a 9/16" wrench as shown in **Photo 11**. Retain the shock hardware for reuse.
3. Support the rear axle.
4. Remove the rear shackle hardware as shown in **Photo 12** using a 9/16" wrench. Retain the hardware for reuse.

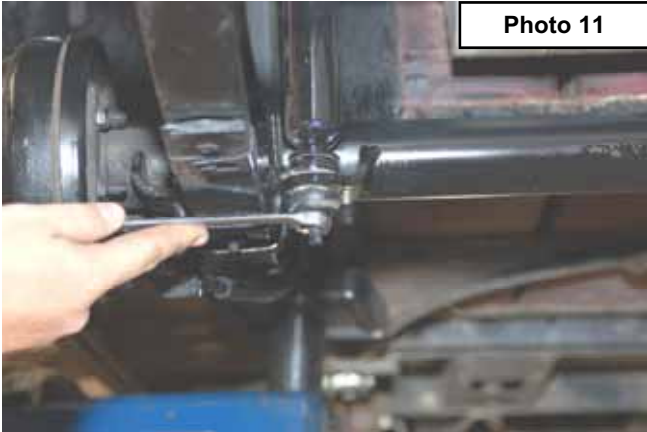


Photo 11

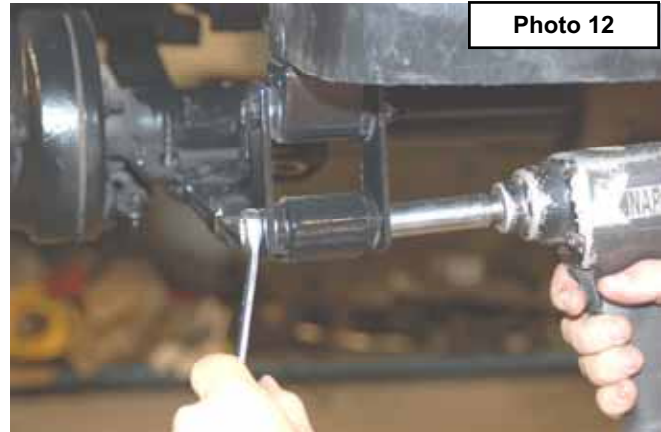


Photo 12

5. Remove the front spring eye from the frame using 3/4" wrench as shown in **Photo 13**.
6. Remove the u-bolts as shown in **Photo 14** using a 9/16" socket. Retain the u-bolts and hardware for reuse.



Photo 13

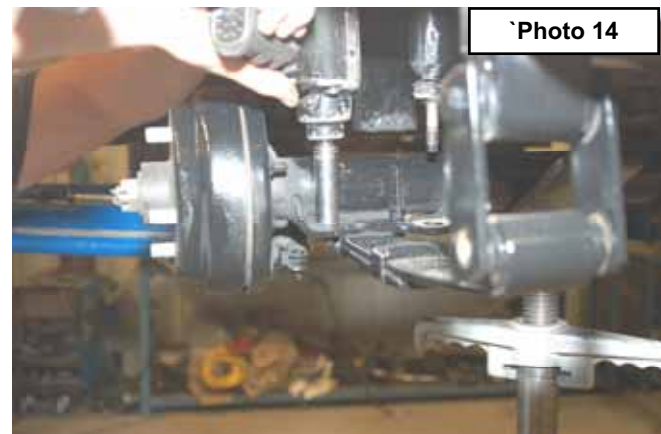


Photo 14

7. Install the bracket as shown in **Photo 15** on the axle with the supplied 3/8" x 1" bolts & washer/nylock nuts. Do not tighten at this time.
8. Install the u-bolts in the new plate and install on the axle as shown in **Photo 16** with the supplied 3/8" x 1" bolts, washers & nylock nuts. Tighten the forward 3/8" bolts first then the rear 3/8" bolts.



Photo 15

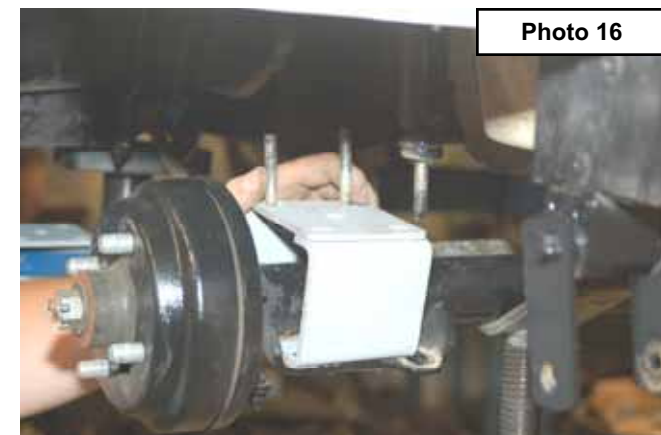
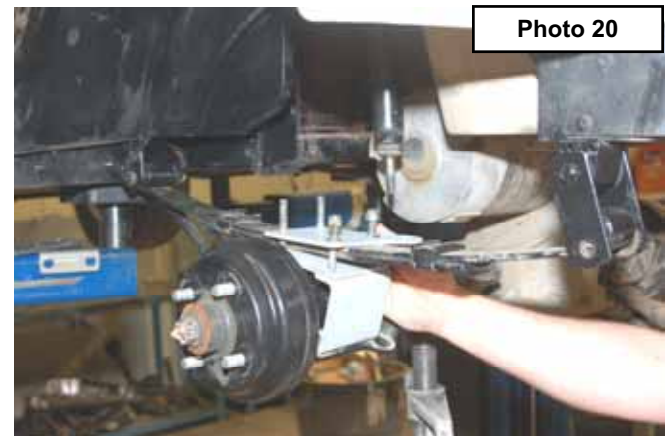
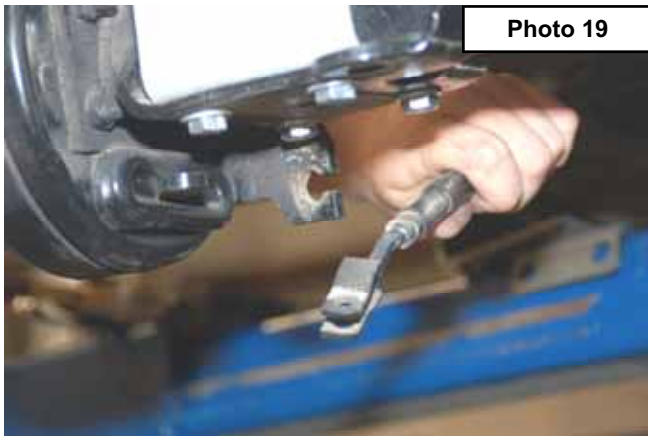


Photo 16

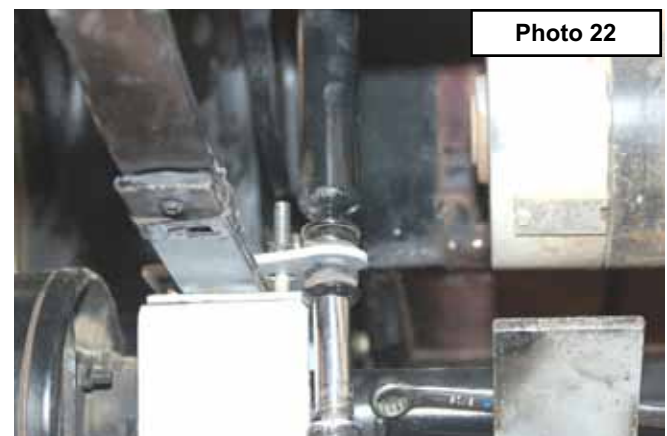
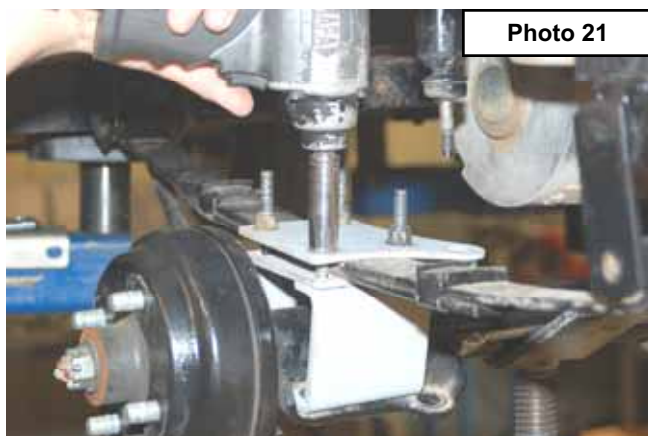
9. Remove the cotter pin from the brake assembly as shown in **Photo 17** and remove the brake line from the brake drum. Retain the hardware for reuse.
10. Remove the c-clip from the e-brake cable as shown in **Photo 18**.



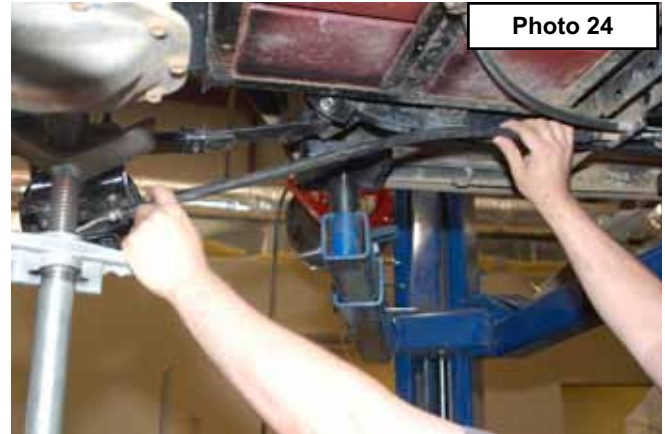
11. Remove from the bracket as shown in **Photo 19**.
12. Lower the axle to allow the leaf spring to be reinstalled as shown in **Photo 20** and install the leaf spring on the cart with the factory hardware on the spring hangers. Tighten the leaf spring hanger bolts using a 9/16" & 3/4" wrench.



13. Install the axle on the leaf spring with the shock bracket as shown in **Photo 21** using the factory hardware on the leaf spring pad. Tighten the leaf spring bolts, but do not tighten the axle pad u-bolts at this time.
14. Install the shock in the new spring plate as shown in **Photo 22** with factory hardware.



15. After installation is complete, pull the e-brake cable out from above the frame rail as shown in **Photo 23** and route it below the frame as shown in **Photo 24**.
16. Install the e-brake line in the stock location using the factory pin and cotter pin.
17. Install the tires/wheels.
18. Jack up the cart and remove the jack stands.
19. Lower the cart to the ground.



#### MAINTENANCE INFORMATION

It is the ultimate buyers responsibility to periodically have all bolts/nuts checked for tightness and to re-torque as needed.